

FURUNO®

12", 15" Sun Light Viewable **MULTI-PURPOSE MARINE LCD DISPLAY**

Models **MU-120C/155C**

- Crystal clear 12" and 15" monitors for use as main or remote displays
- Sunlight viewable with wide viewing angle allows comfortable viewing by more than one person
- Built-in scaler allows monitors to accept up to SXGA (1280 x 1024) resolution
- Waterproof, low profile unit allows for flush mount installation even in an open fly bridge
- Wide range of inputs: 2 RGB analog, 1 Digital Video Interface (DVI) and 3 NTSC/PAL
- Unique programmable video input names
- PIP function allows for displaying two images on the screen at the same time
- Easily control display with standard infrared remote



15": **MU-155C**

12": **MU-120C**

Remote
Controller

The FURUNO MU-120C/155C are multi-purpose displays that feature the unmatched Furuno quality and reliability that you have learned to depend on. These 12" and 15" color monitors feature a wide range of interface capabilities that will accommodate virtually all of your marine display needs.

The MU-120C and MU-155C utilize extremely bright color TFT LCDs with a special AR (anti-reflective) glass filter to cut down on annoying glare. With their bright colors, excellent contrast and wide viewing angles, these monitors are perfect for any tropical sunlight or low light conditions. The MU-120C is an SVGA (800 x 600) display, while the MU-155C is an XGA 1024 x 768 display. Each unit features a built-in scaler, which enables them to accept high resolutions up to SXGA 1280 x 1024.

Both units feature a wide variety of inputs including: 2 RGB analog, 1 DVI-D (Digital Video Interface) and 3 NTSC/PAL video inputs. These displays may be used as either the main or remote display for a variety of marine equipment, such as BlackBox radar, sounders, sonar and NavNet. They can also be used for displaying security cameras, video equipment, computers, etc.

The MU-120C/155C have Picture In Picture (PIP) capability with 3 NTSC/PAL inputs. The display can overlay a video window on top of the main display. This PIP window can be resized and repositioned to anywhere on the screen. Use the PIP function to monitor security cameras, engine room cameras or even your satellite TV.



The future today with FURUNO's electronics technology.

FURUNO ELECTRIC CO., LTD.

9-52 Ashihara-cho, Nishinomiya City, Japan Phone: +81 (0)798 65-2111
Fax: +81 (0)798 65-4200, 66-4622 URL: www.furuno.co.jp

Catalogue No. M-1533

TRADE MARK REGISTERED
MARCA REGISTRADA

SPECIFICATIONS OF MU-120C/155C

DISPLAY CHARACTERISTICS

	MU-120C	MU-155C
Screen Size	12.1 inches 246.0 x 184.5 mm	15 inches 304.1 x 228.1 mm
Resolution	800 x 600 (SVGA)* * VGA up to SXGA signal is acceptable in analog RGB.	1024 x 768 (XGA)*
Contrast Ratio	300:1	400:1
Viewing Angle	Vertical: +60° to -50° Horizontal: left 70° to right 70°	Vertical: +85° to -85° Horizontal: left 85° to right 85°
Brightness	1000 cd/m ²	
Interface		
Analog RGB	2 ports, D-SUB/15 pins	
DVI	1 port, DVI-D	
RCA	3 ports, RCA	
Power Supply	12-24 VDC, 4-2 A	12-24 VDC, 7-3 A

ENVIRONMENT (IEC 60945 test method)

Temperature	-15°C to +55°C
Waterproofing	IPX5 (Front Panel)
EMC	IEC 60945 Ver.4

EQUIPMENT LIST

Standard

1. Display Unit MU-120C/MU-155C 1 unit
2. Remote Controller 1 unit
3. Installation Materials and Spare Parts

Option

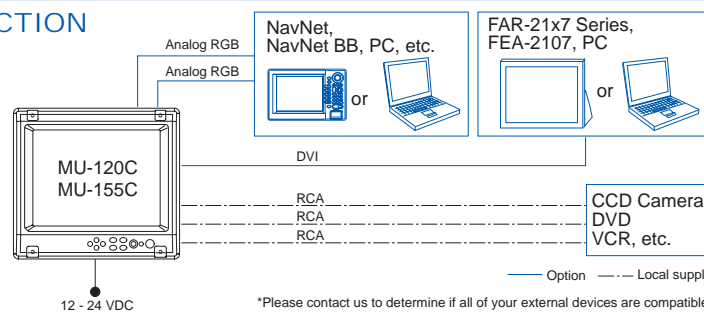
1. Mounting Bracket
2. Interface Cable for Analog RGB 5/10 m, 3COX-2P-6C 5M/10M for DVI 5 m, DVI-D/D SINGLELINK5M

MU-120C and MU-155C work with the following equipment and systems

Equipment	Resolution	Signal Format
NavNet Series 10.4" Color LCD (Model 1823C/1833C/ 1933C/1943C/1953C /GP-1900C) BlackBox (Model 1823C-BB/1833C-BB/ 1933C-BB/1943C-BB/ 1953C-BB/GP-1900C-BB)	VGA	Analog RGB
Echo Sounder FCV-1200L/LM*	VGA	Analog RGB (IF-8000 is required)
Sonar CH-250/S CH-270	VGA VGA	Analog RGB Analog RGB (IF-8000 is required)
CSH-5L FSV-24/24S/30/30S	XGA SXGA	Analog RGB Analog RGB
VideoPlotter GD-280/380/680	VGA	Analog RGB
Radar FR-1510 Mark-3 FR-2115/2125/2155 FR-2117/2127/2137S	XGA SXGA SXGA	Analog RGB Analog RGB DVI
ECDIS FEA-2107	SXGA	DVI

* Landscape installation only.

INTERCONNECTION DIAGRAM

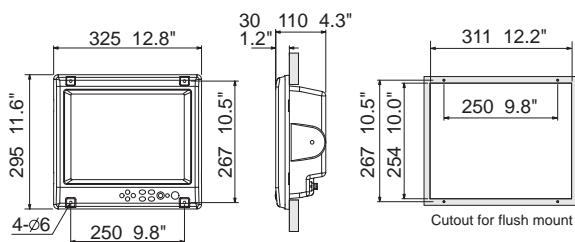


VGA:	640(H) x 480(V) pixels
SVGA:	800(H) x 600(V) pixels
XGA:	1024(H) x 768(V) pixels
SXGA:	1280(H) x 1024(V) pixels

MU-120C

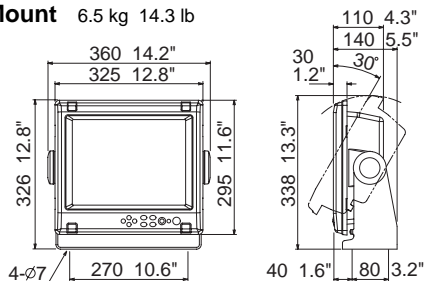
Flush Mount

5.6 kg 12.4 lb



Bracket Mount

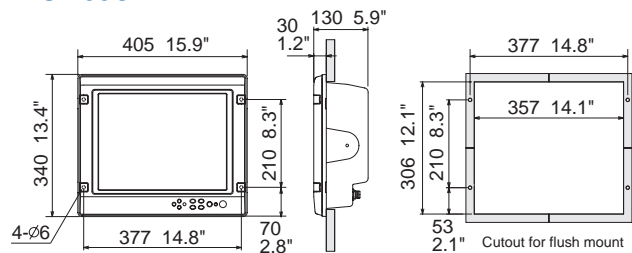
6.5 kg 14.3 lb



MU-155C

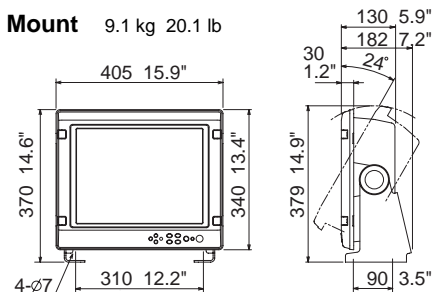
Flush Mount

7.9 kg 17.4 lb



Bracket Mount

9.1 kg 20.1 lb



SPECIFICATIONS SUBJECT TO CHANGE WITHOUT NOTICE

FURUNO U.S.A., INC.

Camas, Washington, U.S.A.
Phone: +1 360-834-9300 Telefax: +1 360-834-9400

FURUNO (UK) LIMITED

Denmead, Hampshire, U.K.
Phone: +44 2392-230303 Telefax: +44 2392-230101

FURUNO FRANCE S.A.

Bordeaux-Mérignac, France
Phone: +33 5 56 13 48 00 Telefax: +33 5 56 13 48 01

FURUNO ESPANA S.A.

Madrid, Spain
Phone: +34 91-725-90-88 Telefax: +34 91-725-98-97

FURUNO DANMARK AS

Hvidovre, Denmark
Phone: +45 36 77 45 00 Telefax: +45 36 77 45 01

FURUNO NORGE A/S

Alesund, Norway
Phone: +47 70 102950 Telefax: +47 70 127021

FURUNO SVERIGE AB

Västra Frölunda, Sweden
Phone: +46 31-7098940 Telefax: +46 31-497093

FURUNO FINLAND OY

Espoo, Finland
Phone: +358 9 4355 670 Telefax: +358 9 4355 6710

04045N Printed in Japan